

J70 CLASS SOUTH COAST CHAMPIONSHIPS 12 – 13 JULY

ORGANISING AUTHORITY ROYAL YACHT SQUADRON COWES

NOTICE OF RACE

The notation '[NP]' in a rule means that a boat may not protest another boat for breaking that rule. This changes RRS 60.1(a).

1. RULES

- 1.1 The event is governed by the rules as defined in the Racing Rules of Sailing (RRS).
- 1.2 The NoR for the 2025 UK J70 Class Grand Slam Series.
- 1.3 [DP] The Equipment Rules of Sailing (ERS).
- 1.4 Notices to Mariners for the Ports of [Southampton](#), [Portsmouth](#) and [Cowes](#) apply.

2. SAILING INSTRUCTIONS

- 2.1 The Sailing Instructions (SIs) will be available on the RYS website (www.rys.org.uk) by 1 July 2025.

3. COMMUNICATION

- 3.1 The Official Notice Board (ONB) will be online at (www.rys.org.uk) and the Race Office will be at the Royal Yacht Squadron (RYS).
- 3.2 All boats shall carry a Marine VHF Radio capable of receiving all normal International VHF Channels. All VHF communication shall be on International VHF channels.
- 3.3 In addition to VHF communication, the Race Committee (RC) may use a Telegram Group to communicate with competitors and a "QR code & Link" will be included in the SIs. Failure to receive information broadcast using Telegram will not be grounds for redress.
- 3.4 [DP] While racing, from the First Warning Signal until the end of the last race of the day, except in an emergency, a boat shall not make voice or data transmissions and shall not receive voice or data communications that are not available to all boats.

4. ELIGIBILITY AND ENTRY

- 4.1 See Series NoR 3.0.
- 4.2 Eligible boats may enter by completing the Entry Form and submitting it, together with the required fee, to (www.rys.org.uk) by 2359 on 10 July 2025.
- 4.3 Late entries may be accepted at the discretion of the Organising Authority (OA).

- 4.4 To be considered an entry in the event a boat shall complete all entry requirements and pay all fees.
- 4.5 All crew must have valid and current Group 1 or Group 3 World Sailing Categorisations, and these must be declared using the Crew Declaration Form before the event. Click this link: (<https://forms.gle/RGLPpz3rUSAAAd6n69>.) In addition all J/70 Owners must have Full membership of the J/70 Class Association; any non-owner Group 1 category helms also need Associate Membership unless they are using a club 70 chartered from RYS, RTYC, RSrNYC or Ryde School for which Cat 1 helm membership is already covered and all Group 3 category sailors must also have Associate Membership and they may not helm unless they both own 100% and pay 100% of all boat costs
- 4.6 Entries shall not be open to competitors and support persons holding only Russian or Belarussian nationality or a boat that is registered with or a member of the National Association in those countries. The OA may amend this rule following any further World Sailing decisions on the situation with Russia and Belarus.

5. FEES

- 5.1 The Entry Fee is £220 per boat.
- 5.2 Entry Fees include the following:
 - (a) Race Management.
 - (b) Opening Ceremony.
 - (c) Prizegiving.

6. CREW LIMITATIONS

- 6.1 A parental (or guardian) consent form and declaration, available on (www.rys.org.uk) shall be submitted for crew under 18 years of age.

7. ADVERTISING

- 7.1 See Series NoR 4.0.

8. QUALIFYING SERIES AND FINAL SERIES

- 8.1 Not used.

9. SCHEDULE

- 9.1 The times shown in the table below are UTC plus 1 hour (British Summer Time - BST). Indicative Tide Times are for High Water (HW) Portsmouth.

DAY HWP (BST)	TIME	FIRST WARNING SIGNAL	NOTES
Day 1 12 JULY HW 1340 – 4.5m	0900 asap asap asap 1700	1055	Briefing by Telegram Race 1 Race 2 Race 3 Race 4 Opening reception and drinks in the RYS
Day 2 13 JULY HW 1420 – 4.5m	0900 asap asap 1600	1025	Briefing by Telegram Race 5 Race 6 Race 7 Prizegiving asap after racing in the RYS

- 9.2 A maximum of four (4) races may be sailed on a day in order to complete the Programme because of weather or other reasons, provided that the Programme does not become more than one race ahead of Schedule.

- 9.3 On the last day of the event, no Warning Signal will be made after 1600.

10. EQUIPMENT INSPECTION

- 10.1 Boats may be inspected at any time during the Event.
- 10.2 The fact that race officials may conduct inspections of a boat does not reduce the responsibilities of each competitor set out in this notice of race.

11. CLOTHING AND EQUIPMENT

- 11.1 See Class Rules.

12. VENUE

- 12.1 Racing will take place from a Committee Vessel (CV) on the Hill Head Plateaux or Bramble Bank.
- 12.2 To indicate the general race area a local racing chartlet can be found in Addendum A.

13. COURSES

- 13.1 The courses to be sailed will be a windward / leeward configuration as described in the SIs.
- 13.2 The courses to be sailed will use a combination of specially laid inflatable marks. A list of marks and their colours will be included in the SIs.

14. PENALTY SYSTEM

- 14.1 RRS 44.1 is changed so that the Two-Turns Penalty is replaced by the One-Turn Penalty.
- 14.2 Where an offset leg at the windward mark is part of the course, penalties while in the zone of the windward mark or on the offset leg shall be delayed and taken at the first reasonable opportunity after clearing the zone of both windward and offset marks on the downwind leg. This change is added to RRS 44.2.
- 14.3 Hearings will be in the RYS as soon as possible after racing.

15. SCORING

- 15.1 See Series NoR 7.0.
- 15.2 One (1) race is required to be completed to constitute a series.
- 15.3 When fewer than five (5) races have been completed, a boat's series score will be the total of her race scores.
- 15.4 When five (5) or more races have been completed, a boat's series score will be the total of her races excluding her worst score.

16. SUPPORT PERSON VESSELS

- 16.1 [DP] Team leaders, coaches, other support personnel and their coach and support boats shall stay outside areas where boats are racing from the warning signal of each race until the end of each race.
- 16.2 All support person vessels shall carry a marine VHF Radio and comply with RRS 37 'Search and Rescue Instructions'.

17. CHARTERED OR LOANED BOATS

- 17.1 Not used.

18. BERTHING

- 18.1 Event berthing is the responsibility of each boat and is not included in the entry fee.

19. LAUNCHING AND HAUL OUT RESTRICTIONS

- 19.1 [DP] Boats shall not be launched, re-launched or hauled out after 1000 on 12 July until the end of the event except with and according to the terms of prior written permission of the RC.

20. DIVING EQUIPMENT AND PLASTIC POOLS

- 20.1 [DP] Underwater breathing apparatus and plastic pools or their equivalent shall not be used around boats between the Preparatory Signal of the first race and the end of the last race.
- 20.2 [DP] No person shall undertake any swimming, underwater or diving activities of any kind within the harbour without a valid permit to dive from the Cowes Harbour Master or the manager of the marina you wish to dive at. This prohibited activity is legislated under Cowes Harbour Commission [General Direction 4.4 & 4.5](#).
- 20.3 [DP] Competitors may at any time and within the existing marina regulations; scrub the hull using flossing, sponging or mechanical devices as long as no person enters the water.

21. DATA PROTECTION

- 21.1 The personal information you provide to the OA will be used to facilitate your participation in the event. If you have agreed to be bound by the RRS and the other rules that govern the Events (the rules), the legal basis for processing that personal information is contract. If you are not bound by the rules, the legal basis for processing that personal information is legitimate interest. Your personal information will be stored and used in accordance with the OA's privacy policy. When required by the rules, personal information may be shared with the RYA, your national authority and/or World Sailing. The results of the event and the outcome of any hearing or appeal may be published.
- 21.2 Competitors automatically grant to the OA, without payment, the right in perpetuity to make, use and show any motion pictures, still pictures and live, taped or filmed television of or relating to the event provided that they do not infringe the privacy rights of participants.
- 21.3 The Royal Yacht Squadron (RYS) and Royal Yacht Squadron Limited (RYSL) Armorial, Burgees and all other associated logos shall not be used by any club or individual without the prior written permission of RYS.

22. RISK STATEMENT

- 22.1 Rule 3 of the RRS states: "The responsibility for a boat's decision to participate in a race or to continue racing is hers alone."
- 22.2 Sailing is by its nature an unpredictable sport and therefore inherently involves an element of risk. By taking part in the event, each competitor agrees and acknowledges that:
- They are aware of the inherent element of risk involved in the sport and accept responsibility for the exposure of themselves, their crew and their boat to such inherent risk whilst taking part in the event;
 - They are responsible for the safety of themselves, their crew, their boat and their other property whether afloat or ashore;
 - They accept responsibility for any injury, damage or loss to the extent caused by their own actions or omissions;
 - Their boat is in good order, equipped to sail in the event and they are fit to participate;
 - The provision of a race management team, patrol boats, and other officials and volunteers by the event organiser does not relieve them of their own responsibilities;

- (f) The provision of patrol boat cover is limited to such assistance, particularly in extreme weather conditions, as can be practically provided in the circumstances;
- (g) It is their responsibility to familiarize themselves with any risks specific to this venue or this event drawn to their attention in any rules and information produced for the venue or event and to attend any competitor or safety briefing held for the event.

23. INSURANCE

- 23.1 Their boat is adequately insured, with cover of at least £3m (or the equivalent) against third party claims.

24. PRIZES

- 24.1 The event prize giving will be at the RYS on 13 July 2025 as soon as possible after racing and any protest(s).
- 24.2 Overall Series prizes will be awarded to the first, second and third boats in the Open and Corinthian Series.
- 24.3 In addition to the series prizes, other trophies may be awarded.

25. FURTHER INFORMATION

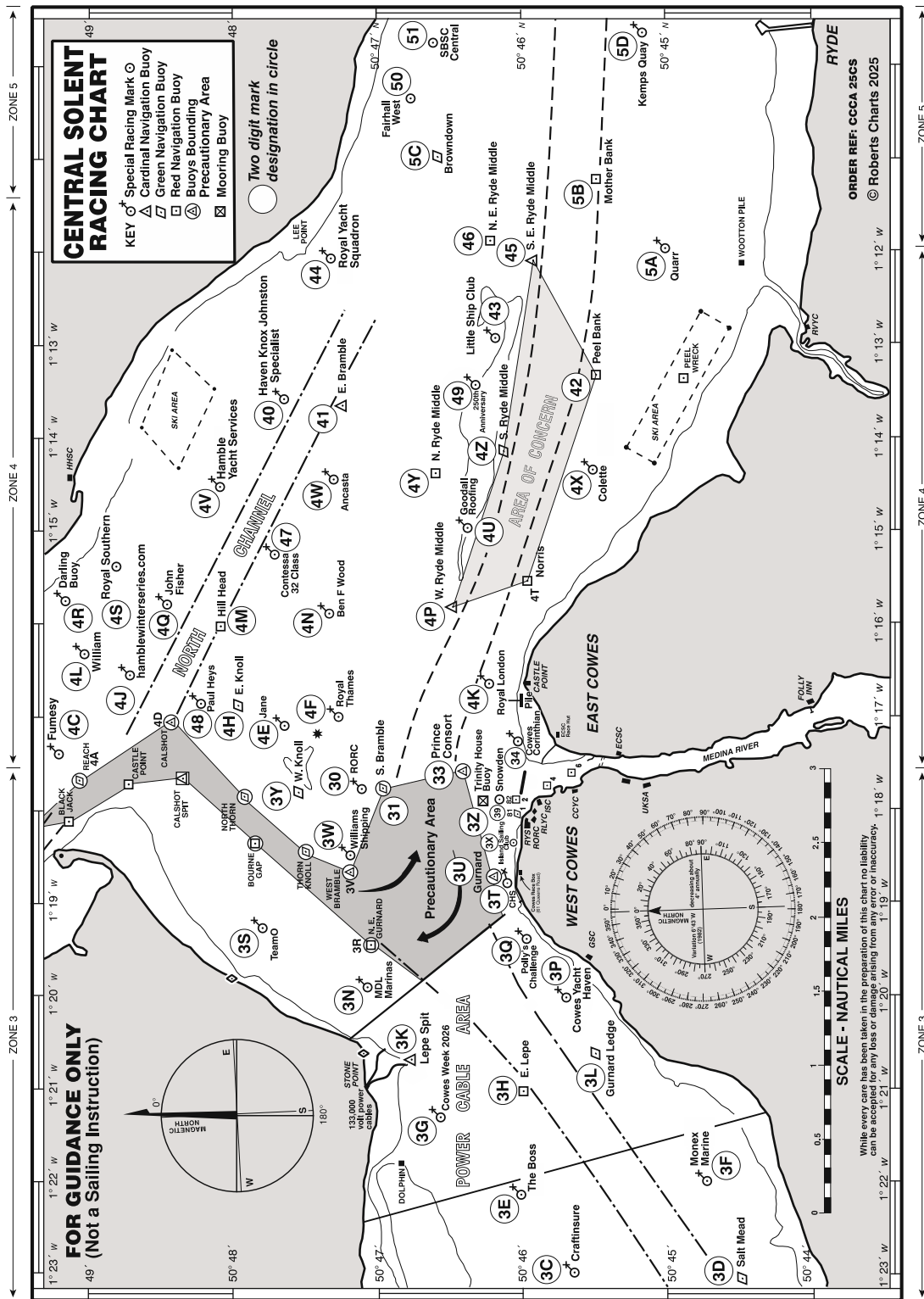
For further information please contact the OA:

The Royal Yacht Squadron
The Castle
Cowes, UK, PO31 7QT
Tel: +44 1983 292 191
mail@rys.org.uk

NOTICE OF RACE ENDS

ADDENDUM A.

See below a chartlet of the Racing Area showing the Solent Two Character Codes.



All correspondence should be directed to:

The Royal Yacht Squadron, The Castle, Cowes, UK, PO31 7QT. Tel: 01983 292191, Email: mail@rys.org.uk